




# THE LANDING

— AT WOOD LAKE —

**YOUR  
PLACE  
TO**

*Unwind*



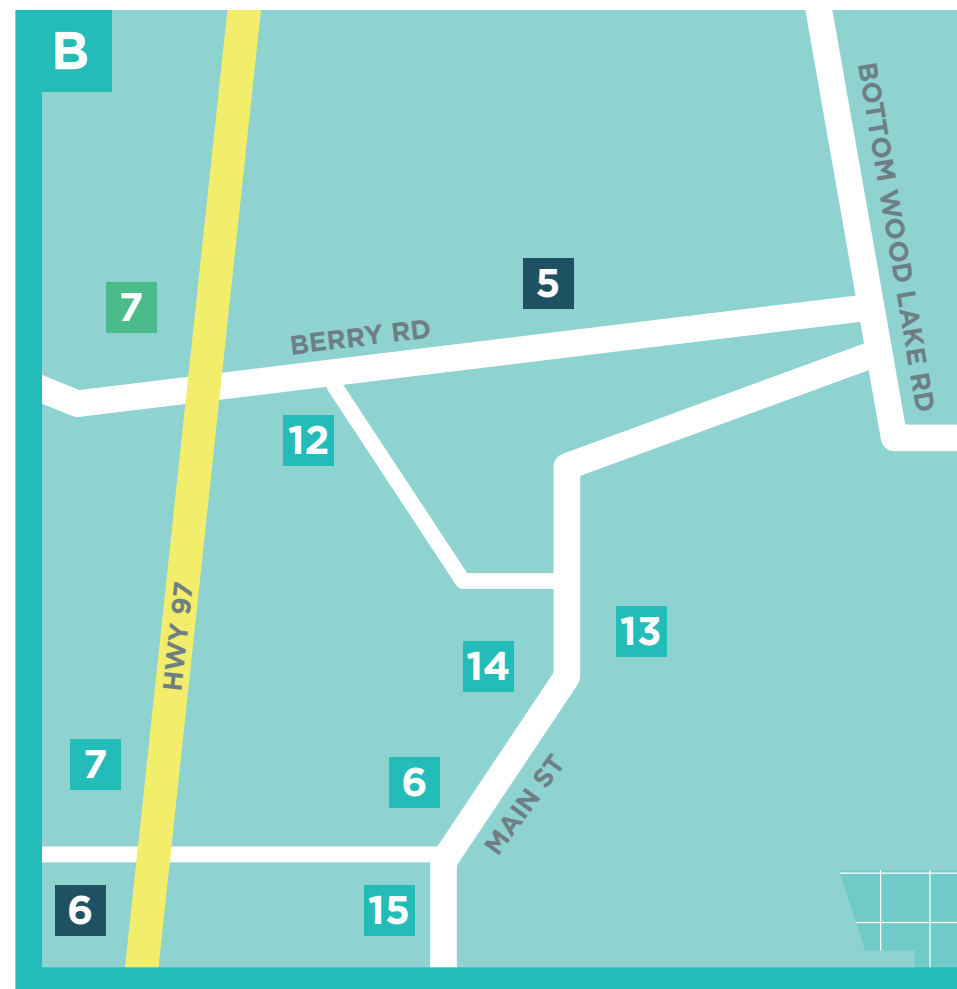


# Discover. Unwind. Find Your Balance.

Surrounded by parks, trails and lakes, The Landing's idyllic setting is naturally calm and serene. It's the perfect place to relax and recharge.

2 and 3 bedroom townhomes from the low \$500Ks, featuring a blend of contemporary and modern beach house elements. Each home offers a two-car garage, private yard space and a 600+ sq. ft. rooftop patio.

West coast design, Okanagan living. The Landing At Wood Lake. Your place to call home.



## COMMUNITY

An urban escape that lets you get back to nature while still enjoying quick access to your favourite amenities. That means shopping, dining, schools and entertainment are just minutes away from the great outdoors.

### RECREATION

- |                                 |                                  |
|---------------------------------|----------------------------------|
| 1. Beasley Park                 | 5. Invati Yoga & Wellness        |
| 2. Okanagan Rail Trail          | 6. Anytime Fitness               |
| 3. Aspen Grove Golf Club        | 7. Okanagan Boys and Girls Clubs |
| 4. Lake Country School of Dance |                                  |

### RESTAURANTS

- |                           |                         |
|---------------------------|-------------------------|
| 1. Greek House Restaurant | 4. Turtle Bay Pub       |
| 2. Chantana's Thai Food   | 5. L'Isola Bella Bistro |
| 3. Turtle Bay GOGO Sushi  | 6. Woody's Pub          |

### SHOPPING AND SERVICES

- |                                      |                             |
|--------------------------------------|-----------------------------|
| 1. Lake Country Cycle                | 8. Tim Hortons              |
| 2. Woodsdale General Store           | 9. BC Liquor Store          |
| 3. Seca Surf & Marine - Lake Country | 10. Starbucks               |
| 4. Lake Country Coffee House         | 11. Turtle Bay IDA Pharmacy |
| 5. Lakewood Mall                     | 12. BC Liquor Stores        |
| 6. Bosley's by Pet Valu              | 13. IGA                     |
| 7. Farmer's Fruit & Produce          | 14. Shoppers Drug Mart      |
|                                      | 15. TD Canada Trust         |

### SCHOOLS

- |                           |                            |
|---------------------------|----------------------------|
| 1. Peter Greer Elementary | 2. George Elliot Secondary |
|---------------------------|----------------------------|

This is not an offering for sale. Such an offering can only be made with a Disclosure Statement, E&OE. The developer reserves the right to make modifications to building design, specifications, features and floorplans. All illustrations and renderings are artistic representations only and are subject to change.





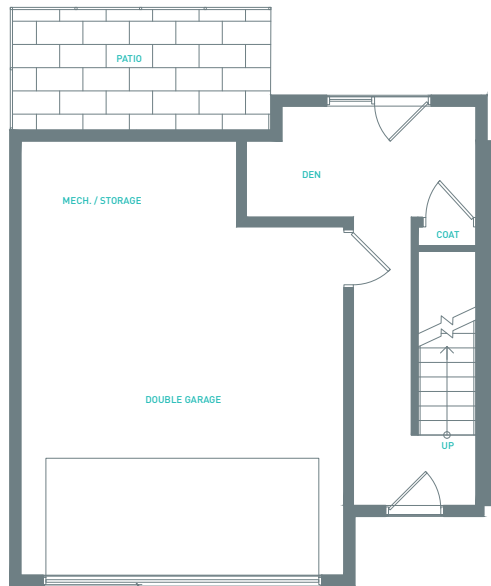
## CHOOSE YOUR HOME

- THE BAY  
2 STOREY UNIT
- THE VISTA  
3 STOREY UNIT

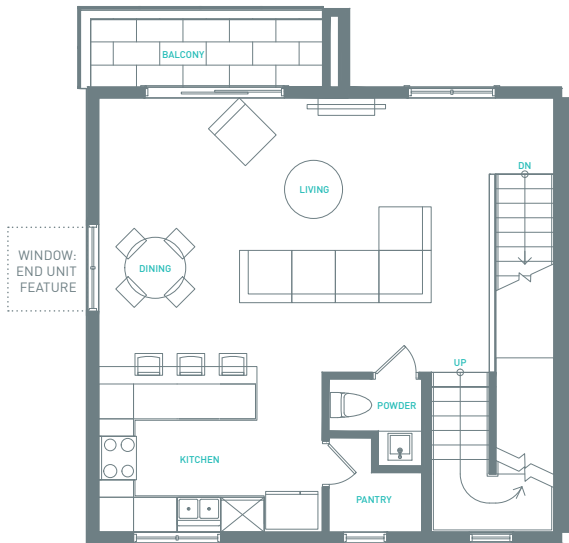
Every home at The Landing is a virtual work of art. From oak-washed floors and natural finishes to gourmet kitchens and rooftop patios, The Landing redefines sophisticated living. There's a home here for you.



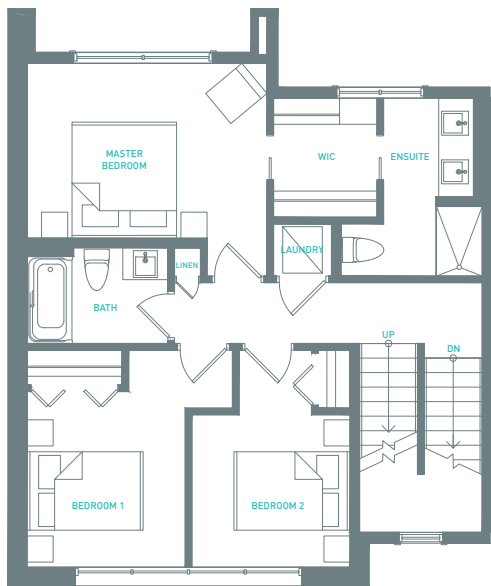




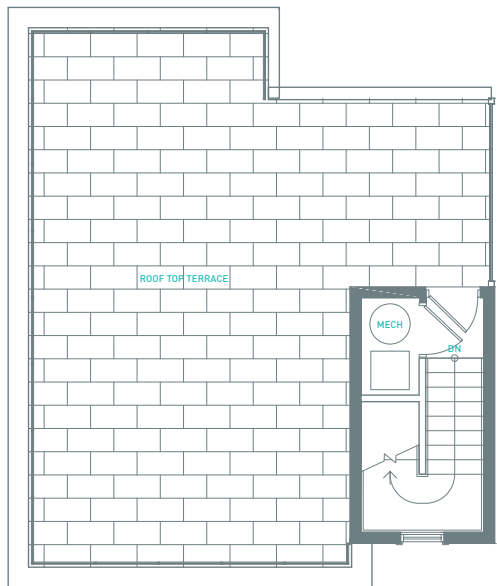
LOWER



MAIN



UPPER



ROOF

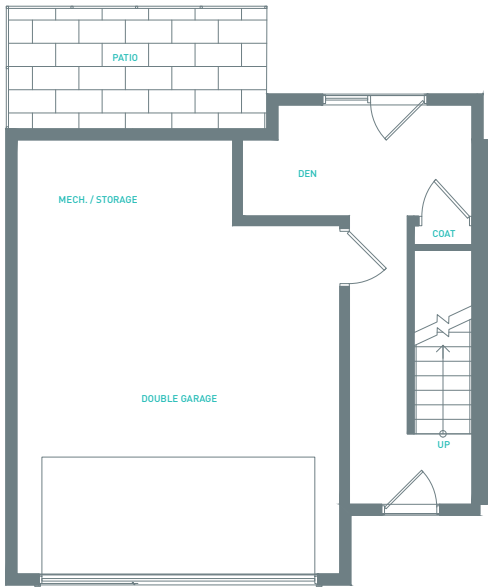
# THE VISTA

3 Storey Townhome  
3 Bed, 2.5 Bath

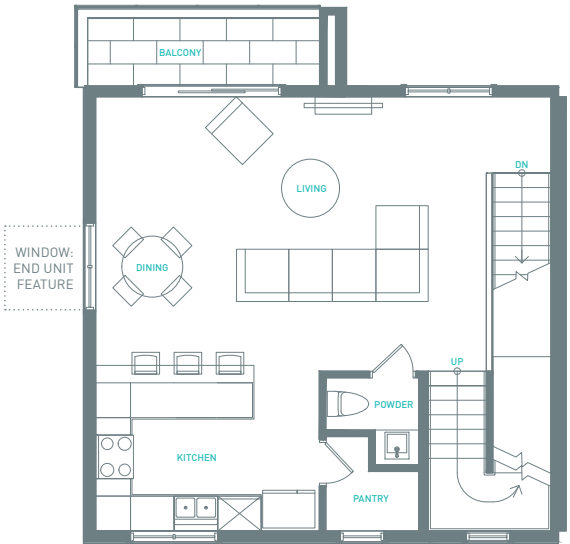
This is not an offering for sale. Such an offering can only be made with a Disclosure Statement. E&OE. The developer reserves the right to make modifications to building design, specifications, features and floorplans. All illustrations and renderings are artistic representations only and are subject to change.

LEVELS	
Lower	235 sq ft
Main	590 sq ft
Upper	725 sq ft
TOTAL 1,550 sq ft	
TERRACE	
Roof	610 sq ft

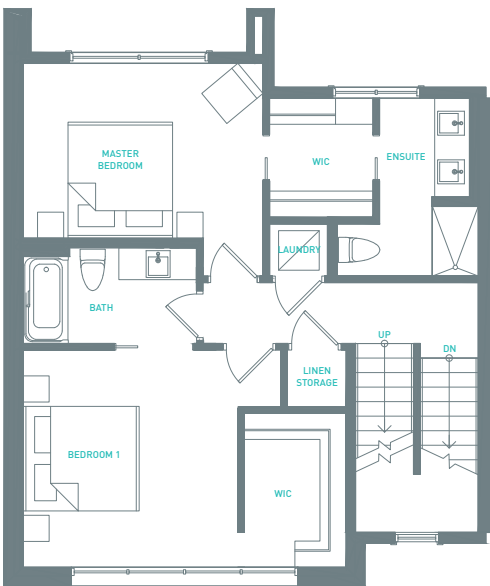
\*Includes rooftop vestibule



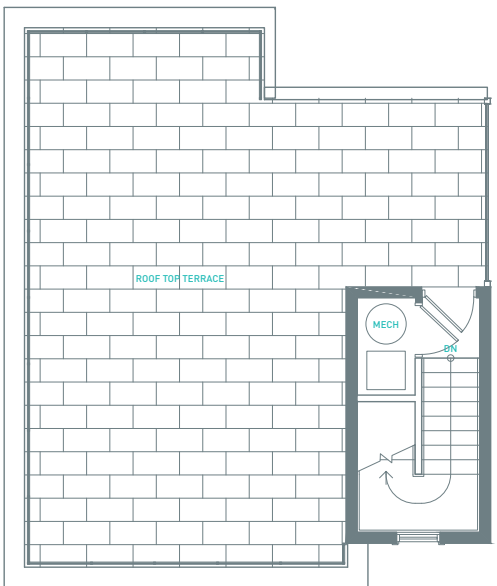
LOWER



MAIN



UPPER



ROOF

# THE VISTA ALT

3 Storey Townhome  
w/ Double Master Suite  
2 Bed, 2.5 Bath

This is not an offering for sale. Such an offering can only be made with a Disclosure Statement. E&OE. The developer reserves the right to make modifications to building design, specifications, features and floorplans. All illustrations and renderings are artistic representations only and are subject to change.

LEVELS	
Lower	235 sq ft
Main	590 sq ft
Upper	725 sq ft
TOTAL 1,550 sq ft	
TERRACE	
Roof	610 sq ft

\*Includes rooftop vestibule



# THE BAY

2 Storey Townhome  
3 Bed, 2.5 Bath

This is not an offering for sale. Such an offering can only be made with a Disclosure Statement. E&OE. The developer reserves the right to make modifications to building design, specifications, features and floorplans. All illustrations and renderings are artistic representations only and are subject to change.

LEVELS	
Lower	685 sq ft
Upper	670 sq ft*
TOTAL 1,355 sq ft	

TERRACE	
Roof	610 sq ft

\*Includes rooftop vestibule

# THE BAY ALT

2 Storey Townhome  
2 Bed, 2.5 Bath

This is not an offering for sale. Such an offering can only be made with a Disclosure Statement. E&OE. The developer reserves the right to make modifications to building design, specifications, features and floorplans. All illustrations and renderings are artistic representations only and are subject to change.

LEVELS	
Lower	685 sq ft
Upper	670 sq ft*
TOTAL 1,355 sq ft	

TERRACE	
Roof	610 sq ft

\*Includes rooftop vestibule



# STANDARD FEATURES



## INTERIOR FEATURES

Engineered hardwood flooring on main floor  
Elegant carpet in bedrooms and hallways  
Tile plank flooring in bathrooms  
Oversized Low E Argon windows throughout  
Energy efficient LED lighting  
9' ceilings on all levels

## KITCHENS

European-style kitchen with flat panel cabinets  
Contemporary cabinet door pulls and soft-close hardware  
Porcelain deco tile backsplash  
Stainless Steel appliance package with upgrades available  
Double square under-mount sink with European faucet  
Quartz countertops  
Oversized walk-in pantry

## BATHROOMS

3-piece master ensuite with double vanity  
Eco-friendly dual flush toilets  
Quartz countertops  
Modern plumbing fixtures

## EXTERIOR

Spacious, maintenance-free private fenced yards  
600 sq. ft.+ private roof top patios with natural gas and water outlets  
Additional balconies on main level (The Vista only)  
2 car garages with additional driveway parking for select units

## MECHANICAL

On-demand tankless hot water  
High efficiency gas furnace with heat recovery ventilation system  
High efficiency air conditioning system







WALK-IN CLOSET UPGRADES



WINDOW COVERING PACKAGE

## AVAILABLE UPGRADES



SMART HOME PACKAGE



APPLIANCE UPGRADES



FLOORING UPGRADES



GARAGE STORAGE PACKAGE



ELECTRIC FIREPLACE UPGRADE




SUSTAINABILITY PACKAGE



## Contact our Property Specialist

 **Jesse Griffith**

 **(250) 826-3623**

 **[jgriffith@troikagroup.ca](mailto:jgriffith@troikagroup.ca)**

**[TheLandingatWoodLake.ca](http://TheLandingatWoodLake.ca)**



 **TROIKA**